

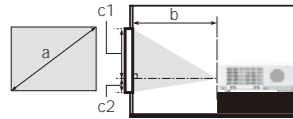
LCD Projectors

Specifications															
Model name	CP-X4042WN	CP-X3042WN	CP-X2542WN	CP-WX4042WN	CP-WX3042WN	CP-EX302N	CP-EX252N	CP-EW302N	CP-EX402	CP-EX302	CP-EX252	CP-EW302			
Display system	3LCD			3LCD			3LCD								
Display device	0.63", aspect ratio 4:3			0.59", aspect ratio 16:10			0.63", aspect ratio 4:3			0.59", aspect ratio 16:10					
Size of effective display area	786,432 pixels			1,024,000 pixels			786,432 pixels			1,024,000 pixels					
Number of pixels	H: 1024 x V: 768 (XGA)			H: 1280 x V: 800 (WXGA)			H: 1024 x V: 768 (XGA)			H: 1280 x V: 800 (WXGA)					
Lens	Manual: x1.2			Manual: x1.2			Manual: x1.2								
Focus	Manual			Manual			Manual								
Light source	225W lamp			225W lamp			225W lamp								
Screen size	30 - 300inch			30 - 300inch			30 - 300inch								
Light output (Brightness)	4,200lm	3,200lm	2,700lm	4,000lm	3,000lm	3,200lm	2,700lm	3,000lm	4,200lm	3,200lm	2,700lm	3,000lm			
Contrast ratio (full white/full black)	10,000:1			2,000:1			2,000:1								
Speaker	16W x 1 mono			16W x 1 mono			1W x 1 mono								
Displayable scanning frequency	15 - 106kHz			15 - 106kHz			15 - 106kHz								
Vertical resolution	50 - 120Hz			50 - 120Hz			50 - 120Hz								
Display resolution	NTSC, NTSC443, PAL, SECAM, PAL-M, PAL-N, PAL(60Hz), 480i@60, 480p@60, 576i@50, 576p@50, 720p@50/60, 1080i@50/60, 1080p@50/60														
Terminals	COMPUTER IN: Mini-D-sub 15-pin connector x 2			MONITOR OUT: Mini-D-sub 15-pin connector x 1 (shared with COMPUTER IN2)			VIDEO IN: RCA connector x 1			HDMI IN: HDMI (HDCP compliant) x 2 * HDMI 2 supports MHL input.			AUDIO IN: 3.5mm stereo mini connector x 2, 2RCA connector L/R x1		
	AUDIO OUT: 3.5mm stereo mini connector x 1			Microphone Input: 3.5mm mono mini connector x 1			Control(RS232C): D-sub 9-pin connector x 1			LAN: RJ45 connector x 1			USB-A: USB type A x 2 (PC-LESS Presentation or Wireless LAN (option))		
	USB-B: USB type B x 1(USB display or USB mouse control)			Operating temperature: 5 - 35°C			Operating humidity: 10 - 90%RH (non-condensing)			Power requirements: AC 100V - 120V (50 / 60Hz): 3.4A AC 220V - 240V (50 / 60Hz): 1.7A			Power consumption: AC 100V - 120V (50 / 60Hz): 330W AC 220V - 240V (50 / 60Hz): 310W		
	Standby mode power consumption: Less than 0.5W at saving mode			Dimensions (W x H x D): 323 x 95 x 245mm (12.7" x 3.7" x 9.6") (Including protrusions)			Weight: Approx. 3.0kg (6.6lbs)			Accessories: Power cord (1.8m), Computer cable (2.0m), Remote control, AA batteries, Lens cover, Adapter cover, Security label, User's manuals (Book, CD), Application CD			Option Parts: Lamp: DT01481, Filter set: UX38841, USB wireless adapter USB-WL-11N *3		

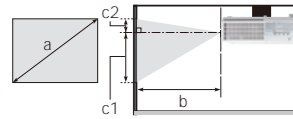
*1: Only for CP-X4042WN, CP-X3042WN, CP-X2542WN, CP-EX302N, CP-EX252N, CP-EX402, CP-EX302, CP-EX252 *2: Only for CP-WX4042WN, CP-WX3042WN, CP-EW302N, CP-EW302 *3: The availability of the USB-WL-11N varies depending on the country and the region.

Projection Distance

On a horizontal surface



Suspended from the ceiling



CP-X4042WN / CP-EX402

(1,024 x 768) (±10%)									
a		b		c1		c2			
Screen size (diagonal)		Projection distance		Screen height		Screen height			
type		min. max.		min. max.		min. max.			
60	1.5	1.8	70	2.1	84	78	31	13	5
80	2.0	2.4	94	2.9	113	105	41	17	7
100	2.5	3.0	118	3.6	142	131	51	22	9
120	3.0	3.6	142	4.3	170	157	62	26	10
150	3.8	4.5	177	5.4	214	196	77	33	13
200	5.1	6.0	237	7.3	286	261	103	44	17

CP-WX4042WN

(1,280 x 800) (±10%)									
a		b		c1		c2			
Screen size (diagonal)		Projection distance		Screen height		Screen height			
type		min. max.		min. max.		min. max.			
60	1.5	1.9	74	2.3	89	75	30	6	2
80	2.0	2.5	99	3.0	120	100	39	8	3
100	2.5	3.2	125	3.8	150	125	49	10	4
120	3.0	3.8	150	4.6	181	150	59	12	5
150	3.8	4.8	188	5.8	227	188	74	14	6
200	5.1	6.4	252	7.7	303	250	98	19	8

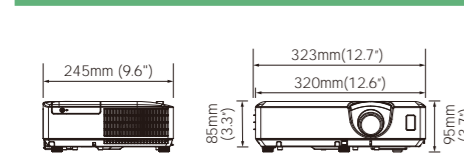
CP-X3042WN / CP-X2542WN / CP-EX302N / CP-EX252N / CP-EX302 / CP-EX252

(1,024 x 768) (±10%)									
a		b		c1		c2			
Screen size (diagonal)		Projection distance		Screen height		Screen height			
type		min. max.		min. max.		min. max.			
60	1.5	1.8	70	2.1	84	78	31	13	5
80	2.0	2.4	94	2.9	113	105	41	17	7
100	2.5	3.0	118	3.6	142	131	51	22	9
120	3.0	3.6	142	4.3	170	157	62	26	10
150	3.8	4.5	177	5.4	213	196	77	33	13
200	5.1	6.0	237	7.2	285	261	103	44	17

CP-WX3042WN / CP-EW302N / CP-EW302

(1,280 x 800) (±10%)									
a		b		c1		c2			
Screen size (diagonal)		Projection distance		Screen height		Screen height			
type		min. max.		min. max.		min. max.			
60	1.5	1.9	74	2.3	89	75	30	6	2
80	2.0	2.4	94	2.9	113	105	41	7	7
100	2.5	3.0	118	3.6	142	131	51	22	9
120	3.0	3.6	142	4.3	170	157	62	26	10
150	3.8	4.5	177	5.4	213	196	77	33	13
200	5.1	6.0	237	7.2	285	261	103	44	17

Dimensions



Environment

- **Compliance with EU Directive RoHS¹**
- **Reduction of resin usage in production**
Use of hot runners in molds for making upper housing in order to reduce mill ends.
- **Reduction of CO₂ emissions**
Carton volume has been cut down to 65%², reducing CO₂ emissions during transport.
- **Power saving mode engaged during standby**
- **Eco mode**
Eco mode provides power saving.

¹ RoHS is the acronym of "Directive 2011/65/EU of the European Parliament and of the Council of 8 June 2011 on the restriction of the use of certain hazardous substances in electrical and electronic equipment".
² Compared to Hitachi CP-X2515WN network capable projector on the basis of one carton box.

—Design and specifications are subject to change without notice.

The projected images and comparison photos in this catalog are simulations. LCD panels, polarizers and other optical components and cooling fans may need replacement after prolonged usage. For more details, please consult a Hitachi sales representative. Do not use in places where there is a lot of water, dampness, steam, dust, soot or tobacco smoke. This may result in fire or malfunction. Optical components (lamp, LCD panel, polarizing plate, PBS [polarizer beam splitter]) have limited service lives. They must be repaired or replaced if they are used for a long period of time. These projectors use a mercury lamp with high internal pressure. Because of its properties, this lamp may burst with a loud noise or burn out if struck or after it has been used for a period of time. The time until it bursts or burns out varies greatly according to differences between lamps and usage conditions. Turning the lamp's power on and off frequently shortens its service life. Optical components other than the lamp: If the projector is used for six hours or more per day, they may need to be replaced in less than a year. LCD panel: If the projector is used continuously for six hours or more, its replacement cycle may be shortened. Do not turn projector on again for ten minutes after shutdown. Neglect can shorten the lifetime of the lamp. During use and immediately after use, do not touch anywhere near the lamp and the vents as these parts are extremely hot. Windows® is a trademark, or a registered trademark of Microsoft Corporation in the United States and/or other countries. Crestron Connected and the Crestron Connected Logo are registered trademarks of Crestron Electronics. MHL, the MHL logo, and Mobile High-Definition Link are trademarks or registered trademarks of MHL, LLC in the United States and other countries. HDMI, the HDMI Logo, and High-Definition Multimedia Interface are trademarks or registered trademarks of HDMI Licensing LLC in the United States and other countries. ImageCare is a trademark or a registered trademark of Philips Lighting in the United States and other countries. All other trademarks are the properties of their respective owners.



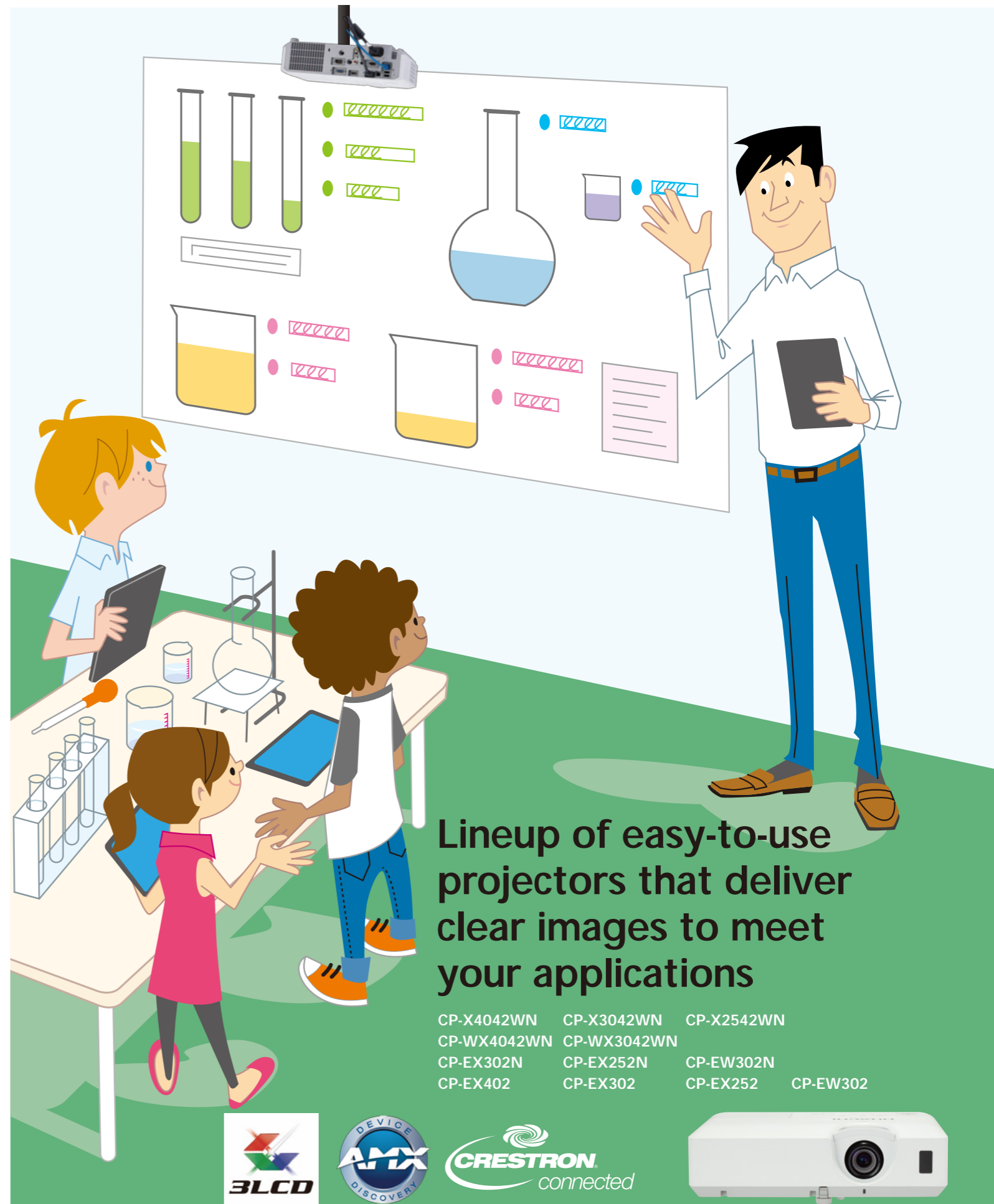
HITACHI

Hitachi America, Ltd., Digital Media Division
Hitachi Home Electronics Asia (S) Pte. Ltd.
Hitachi Sales (Malaysia) Sdn. Bhd.
Hitachi Sales (Thailand), Ltd.
Hitachi (Hong Kong), Ltd.
Hitachi Sales Corp. of Taiwan
Hitachi Australia Pty Ltd.
Hitachi Europe Ltd., Digital Media Group Consumer Affairs Department
Hitachi Maxell, Ltd.

2420 Fenton Street, Suite 200 Chula Vista, CA 91914, U.S.A. and Canada Tel: +1-800-225-1741 www.hitachi-america.us/digitalmedia
438A Alexandra Road #01-01/02/03, Alexandra Technopark, 119967, Singapore Tel: +65-6536-2520 www.hitachiconsumer.com.sg
Lot 12, Jalan Kemajuan, Bangi Industrial Estate, 43650 Bandar Baru Bangi, Selangor Darul Ehsan, Malaysia Tel: +60-3-8911-2670 www.hitachiconsumer.com.my
994, 996 Soi Thonglor, Sukhumvit 55 Road, Klongtonnua, Vadhana Bangkok 10110, Thailand Tel: +66-2335-5455 www.hitachi-th.com
18th Floor, Ever Gain Centre, 28 On Muk Street, Shatin, N.T., Hong Kong Tel: +852-2113-8883 www.hitachi-hk.com.hk
2nd Floor, No.65, Nanking East Road, Section 3, Taipei 104, Taiwan Tel: +886-2-2516-0500 www.hsct.com.tw
Suite 801, Level 8, 123 Epping Road, North Ryde NSW 2113, Australia Tel: +61-2-9888-4100 www.hitachi.com.au
Whitebrook Park, Lower Cookham Road, Maidenhead, Berkshire, SL6 8YA, UK Tel: +44-1628-585000 www.hitachidigitalmedia.com
5030 Totsuka-cho, Totsuka-ku Yokohama, 244-0003, Japan http://www.hitachi.co.jp/proj/

August 2016

NM-E413 082016



Lineup of easy-to-use projectors that deliver clear images to meet your applications

- CP-X4042WN
- CP-X3042WN
- CP-X2542WN
- CP-WX4042WN
- CP-WX3042WN
- CP-EX302N
- CP-EX252N
- CP-EW302N
- CP-EX402
- CP-EX302
- CP-EX252
- CP-EW302



*Projected images are simulations CP-EX402, CP-EX302, CP-EX252 and CP-EW302 do not support AMX Device Discovery and Crestron Connected.

